

Central Proud

February 2026

Heart of the
Community

Central Bradford County Chamber Of Commerce

**SUPPORT
GROWTH**

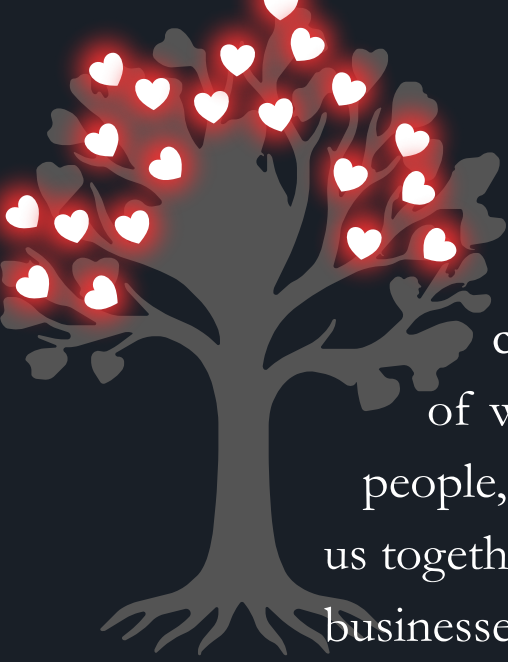
LOVE LOCAL

**BUILDING
PARTNERSHIPS THAT
WARM OUR WINTER
MONTHS**

SHARE SUCCES

Issue 0003





Dear Members and Friends,
As we step into February, a month often celebrated for connection and community, we are reminded of the heart of what makes Bradford County so special: our people, our businesses, and the partnerships that bring us together. This month, we encourage you to celebrate local businesses, strengthen existing connections, and explore new opportunities for growth. Whether it's attending a Chamber event, collaborating with a fellow member, or simply supporting a neighbor, every small action helps our community thrive. From all of us at the Chamber Board and Executive Office, thank you for your dedication to making our community stronger, warmer, and more connected each day. Together, we continue to build a place where businesses succeed and our community flourishes.

With appreciation,



CENTRAL BRADFORD COUNTY
CHAMBER *of* COMMERCE





Chamber Cheers

*Raafs
Jeweler's
&
Awards*

570-265-3621



YOU ARE INVITED TO THE



CENTRAL BRADFORD COUNTY
CHAMBER *of* COMMERCE

ANNUAL

DINNER

ON APRIL 2ND

5PM -
7:30PM

111 LAKE RD,
WYSOX, PA 18848



Theme

Roots, Resilience & the
Road Ahead



Built on Connection

*Bradford County Queen
size Quilt Raffle*

HELP SPONSOR PA250 EVENTS

\$5 PER TICKET

6 FOR \$20



What started with a vision and a few volunteers has blossomed into a thriving sanctuary, giving hundreds of animals the care and second chances they deserve.

Heart of the Community



Meet Calculator
7 years 7 months
Female

OR

Glitch
2 Year old
Male



New Year . New Opportunities . Same Strong Community

Lunch & Learn

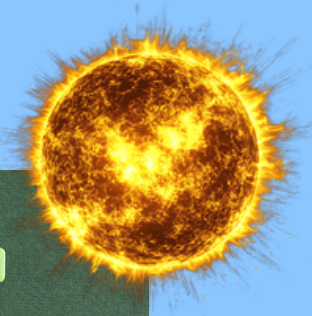
Lunch will be provided

Pre-registration is Required

*Internal Controls for
Nonprofit
With*

AMY BENJAMIN

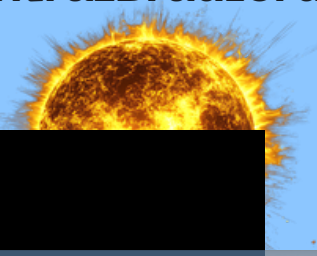
**T
E
A
M**



Join Us: February 25th at Noon

Progress Plaza Suite 2 Conference Room

To register visit our calendar at
www.CentralBradford.org



**Net at
Night**

A networking at night event brings professionals together after hours in a relaxed, social setting where conversation flows easily, connections are made naturally, and ideas spark under the glow of evening lights.

**Join us:
February 19th - Karaoke night
At The Flying Taco 5PM**





PRESENTED BY:



INTERNAL CONTROLS FOR NONPROFIT ORGANIZATIONS



What are "internal controls" and why are they important to your organization?

Are you properly safeguarding your organization's assets (cash, etc.) from potential fraudulent activity?

Does your organization prepare an annual budget?

Do you know what "separation of duties" means?

Are you often correcting mistakes within your financial system?

Learn about best practices and how to improve your organization's financial policies and procedures!

WEDNESDAY, FEBRUARY 25TH

12:00PM - 1:00PM

CENTRAL BRADFORD

**CHAMBER OF COMMERCE OFFICE
PROGRESS AUTHORITY BUILDING
1 ELIZABETH STREET
TOWANDA, PA 18848**

COST IS FREE AND LUNCH WILL BE PROVIDED

**RSVP TO: JUSTIN VANDERPOOL
JUSTIN@CENTRALBRADFORD.ORG**

Growing Together

Finance Tip

Check In on Your Numbers A Little at a Time

You don't have to be a numbers expert to stay on track. Taking a quick look at your income and expenses each month can help you spot opportunities, manage cash flow, and avoid surprises down the road.

Bradford County Resources:

- Local community banks and financial advisors
- Small business workshops shared through the Chamber

HR Tip

Clear Expectations Make for Happier Teams

When employees know what's expected, everyone wins. Updating job descriptions and workplace policies helps reduce confusion and builds trust with your team.

Local Help:

- Pennsylvania Department of Labor & Industry resources
- Local HR professionals and consultants



Marketing Tip

Show Up Consistently

Your Community Is Watching
Regular, simple posts often work better than flashy campaigns. A few authentic updates each week help customers stay connected to your business and remind them to shop local.

Easy Ideas That Work:

- Introduce a team member
- Share a photo from your day-to-day work
- Highlight your involvement in a Bradford County event

Chamber Connection

Looking for trusted local experts, training opportunities, or business-to-business connections?

The Central Bradford County Chamber of Commerce is here to support you every step of the way.

Compliance Corner

Start the Year on the Right Foot

Make sure required labor posters are up to date, safety policies are current, and employee handbooks reflect today's standards.

Small Business Benefits That Deliver Big Impact

Many small businesses assume competitive benefits are out of reach due to cost. The reality is that some of the most effective benefit programs aren't the most expensive...they're simply the most intentional. For employers with limited budgets, the goal shouldn't be to match Fortune 500 benefit plays, but to focus on offerings that employees genuinely value and use.

One of the highest impact benefits is flexibility. Flexible scheduling, hybrid work options, and generous PTO policies consistently rank among the top drivers of employee satisfaction, often at little to no direct cost. For many employees, flexibility can outweigh higher salaries elsewhere.

Another powerful option is financial wellness support. Benefits such as student loan repayment assistance, emergency savings programs, or access to financial coaching help employees manage real-life stressors. Even modest contributions or educational tools can significantly improve engagement and retention.

Mental health resources are also increasingly important. Expanding Employee Assistance Programs (EAPs), offering virtual counseling, or providing mental health days sends a clear message that employee well-being matters. These programs are often affordable and widely appreciated.

Small businesses can also benefit from offering voluntary benefits, such as accident insurance, critical illness coverage, or pet insurance. While these benefits are typically employee-paid, they enhance the overall benefits package and give employees more choice without increasing employer costs.

Finally, clear communication can amplify the value of every benefit offered. Simple benefit summaries, short videos, or manager talking points help employees understand and appreciate what's available to them.

In today's competitive labor market, small businesses don't need the biggest benefits budget to compete. By focusing on flexibility, well-being, financial support, and communication, employers can build benefits programs that punch well above their weight.

The Central Bradford County Chamber of Commerce offers its members access to My Benefit Advisor as a solution for employee benefits, including voluntary offerings. For more information about My Benefit Advisor, visit our website at cbccc.mybenefitadvisor.com or contact Rob Higginbotham at (800) 377-3539.

Building the Future

pasbdc.org/scranton

Want to start a small business?

The SBDC can guide a start-up/pre start-up with:



Visit pasbdc.org/scranton
to request consulting.

PENNSYLVANIA
S B D C Small Business Development Center
The University of Scranton
Helping businesses start, grow, and prosper.

(570) 941-7588

Want to start a business? **The University of Scranton SBDC** is here to help you take the first step.

Their team provides expert support to guide future entrepreneurs through every stage of the startup process, including:

- Exploring your business idea
- Navigating licenses & regulations
- Writing a business plan
- Market research & funding options
- Planning your grand opening
- And more

Live and on-demand training options are also available to help you build confidence and skills as you launch your business.

Resources are available at **no cost** to those looking to start or grow a business. Start your journey at pasbdc.org/scranton.

SPRING FESTIVAL & VENDOR FAIR

March 28th 10 a.m. – 3 p.m.



OPEN TO THE PUBLIC!

ALL AGES & ABILITIES ARE WELCOME!

SOMETHING FOR EVERYONE!

A project of:

Building Outreach Opportunities, Inc

VENDORS & EXHIBITORS!

- \$10/ space + donation for egg hunt prize or basket raffle
- Non-profits register for free!

Reserve your space today!



Call/text: 570-485-8616 or scan the QR code to Register online

- Spring Craft Vendors & Exhibitors
- Kid's activities & crafts, PETTING ZOO
- Easter bunny
- Family friendly games & activities
- Easter Egg Scavenger hunt held throughout the day
- Bouncy house
- Food Trucks/Concessions
- MORE!

Wysox Community Park, River Access Road (off Rt 187 S.), Wysox

Parking available onsite, with overflow parking at 22541 Rt 187

Free shuttle bus available to/from overflow lot

AT SCALES & TAILS

DIP THE TIP! INK!

VALENTINE'S FLASH SALE!

FEBRUARY 7TH

ONE DAY ONLY!

\$50

VALENTINE FLASH DESIGNS!

FIRST COME, FIRST SERVED!

Grandparents Raising Grandchildren Event



Are you a grandparent raising your grandchild or grandchildren?

- ★ Helpful Info & Resources
- ★ Free Childcare Provided
- ★ Valentine's Craft for Kids
- ★ Light Refreshments

Tuesday, February 3rd

4:00 p.m. - 5:30 p.m.

SAFE • Supporting Area Families Everyday

213 Main St. • Towanda, PA

We hope to see you there!

Please RSVP:

570-250-7401

safe@safenepa.org

SPONGEBOB MINI GOLF

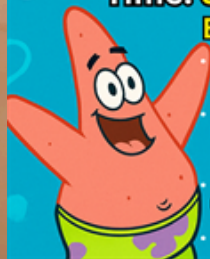
A BIKINI BOTTOM CHALLENGE

Date: July 11th, 2026

Time: 9 a.m.-5 p.m.

Event Highlights:

- Bikini Bottom Challenge: Putt your way through Bikini Bottom with SpongeBob and his friends
- Sweet Treats: Don't forget to stop inside for an ice cream after all the fun, we know SpongeBob and Patrick would want you to!
- Every putt supports S.A.F.E.'s mission to help families in Bradford and Susquehanna counties!
- DOOR PRIZES AVAILABLE!



Location: The Mad Bakers
1964 Golden Mile Rd, Wysox, PA



Supporting Area Families Everyday
http://safenepa.org
570-650-9401

Before you open your gates to the public, learn what agritourism *really* takes.

From Idea to Implementation: Making Agritourism Work for Your Farm

presented by:



Agritourism can diversify income and build community connections - but, it's not the right fit for every farm. The summit is designed to help farmers realistically evaluate whether agritourism aligns with their goals, capacity, and risk tolerance.

This Summit Will Cover

- Day to day operations
- Common challenges
- Marketing and managing visitors
- How to decide if agritourism fits your farm and family

Who Should Attend

- Farmers considering agritourism
- Existing agritourism operators
- Agricultural and community partners

Presenter:

Winifred McGee, Ag Business Consultant

In partnership with:



Event Details



Wed. March 4th



Bradford County
Public Safety Center

29 VanKuren Drive
Towanda, PA



9:00am - 12:00pm

8:30am Registration

**FREE to attend and
lunch is provided**

Register Here:

<https://lp.constantcontactpages.com/ev/reg/22r5kcw>



WWW.NORTHERNTIER.ORG  

Selling Products Online: Setting Your Rural Business Up for Success

Hosted By:



northern tier
regional planning
& development
commission

Selling products online can help rural businesses reach new customers, but success starts with the right foundation. This webinar guides rural small business owners through the key planning steps needed before selling on Facebook, a website, or online marketplaces.

Here's What You'll Learn


- How to determine if your business is ready to sell online and what planning is required
- Identifying your target customer and choosing the right online sales platforms
- Building a strong online storefront with effective product photos and descriptions
- Marketing essentials to drive traffic and build customer loyalty
- Avoiding common pitfalls and measuring success so you can adapt and grow
-



EVENT DETAILS:

 Thursday, February 12th

 Virtual

 12:00pm - 1:00pm

REGISTER HERE:

<https://pasbdc.ecenterdirect.com/events/33248>

PRESENTERS:

Gretchen Kukuchka

University of Scranton SBDC Business Consultant

Jacqueline Escobar

Wilkes University SBDC Business Consultant

PENNSYLVANIA
SBDC

Small Business Development Center
The University of Scranton
Helping businesses start, grow, and prosper.

PENNSYLVANIA
SBDC

Small Business Development Center
Wilkes University
Helping businesses start, grow, and prosper.

WWW.NORTHERNTIER.ORG



**STRONG COMMUNITIES GROW WHEN
WE SUPPORT ONE ANOTHER—TODAY
AND EVERY DAY**

**GREAT THINGS
HAPPEN WHEN
BUSINESSES INVEST
IN PEOPLE AND
PLACE.**

PINE GROVE SELF STORAGE & SHED SALES LLC

**CBCCC MEMBERS RECEIVE \$100 OFF IN-STOCK SHEDS/GARAGES OR
\$200 OFF CUSTOM-BUILT UNITS.**

(570) 637-8683

BUILDING OUTREACH OPPORTUNITIES, INC.

**DONATE A NEW CLEANING SUPPLY AND RECEIVE ½ OFF ADMISSION TO
WYSOX HAUNTED HOUSE EVENTS.**

(570) 485-4472

ACTIONFAST PLUMBING

CBCCC MEMBERS RECEIVE 10% OFF PLUMBING SERVICE LABOR.

(570) 265-6226

Thank you for being you

**MESSAGE TODAY TO ADD A MEMBER
TO MEMBER**

Chamber Benefit!

570-637-5053

JUSTIN@CENTRALBRADFORD.ORG